

An architectural dialogue between
History and Modernity.



15°32'30.6 N

73°50'42.2 E



A Place Where Time Stands Still

Scape is a gateway into the quiet luxury of time, to breathe deeply, watch the sun kiss the glistening sea, and lean into stillness. Tucked away into the beauty of the Goan landscape, it is an invitation to slow down.

Crafted in collaboration with **Ashiesh Shah**, each residence draws from Goa's architectural roots while offering a refined, contemporary experience. These homes are shaped with clarity, generous in proportion, thoughtful in detail, and quietly luxurious in spirit.

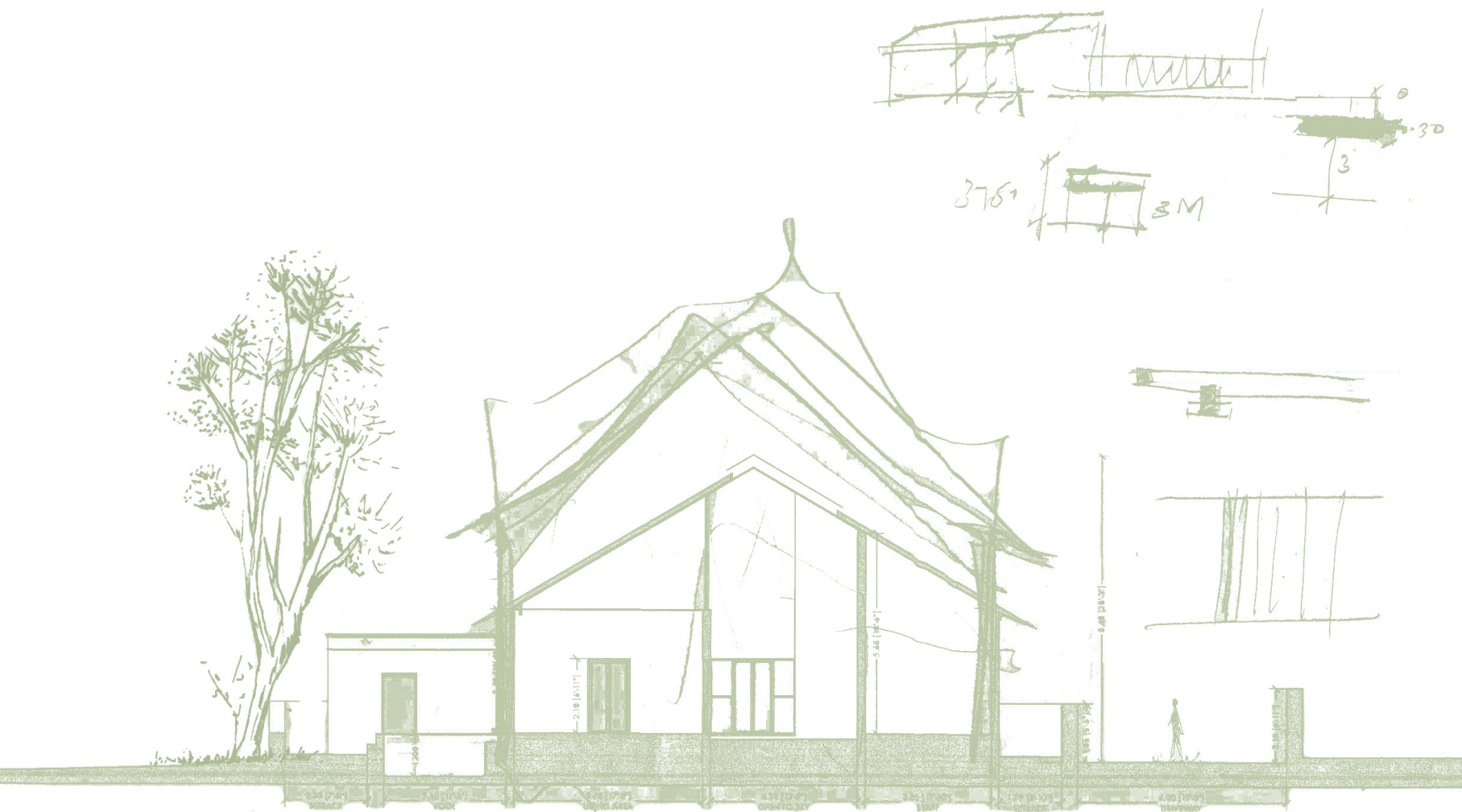




“Challenging and breaking boundaries of what design entails, molding the concept of design and defining it subjectively is what I love most about it.”

Ashiesh Shah’s architecture invites stillness, spaces shaped by light, material, and the passage of time. Known for his seamless dialogue between tradition and modernity, Shah’s spaces are curated experiences. Each form, texture, and detail reflects a deep sensitivity to context, evoking an understated elegance that feels both grounded and elevated. With an eye for balance and restraint, his work transcends trends, offering a tactile, timeless luxury that resonates far beyond its surfaces.

In conceptualizing these villas, Ashiesh Shah sought to capture the essence of Salvador do Mundo, its lush landscape, cultural layers, and rooted architectural language. The exteriors embrace Goa's traditional architectural form, using local materials and craftsmanship that root each home in its natural and historical context. Inside, Shah takes a contemporary turn, creating spaces that are minimal yet warm, refined yet tactile. These homes are a testament to timeless design, deeply human, sensory, and rooted in place.



ASHIESH SHAH
ARCHITECT

SALVADOR

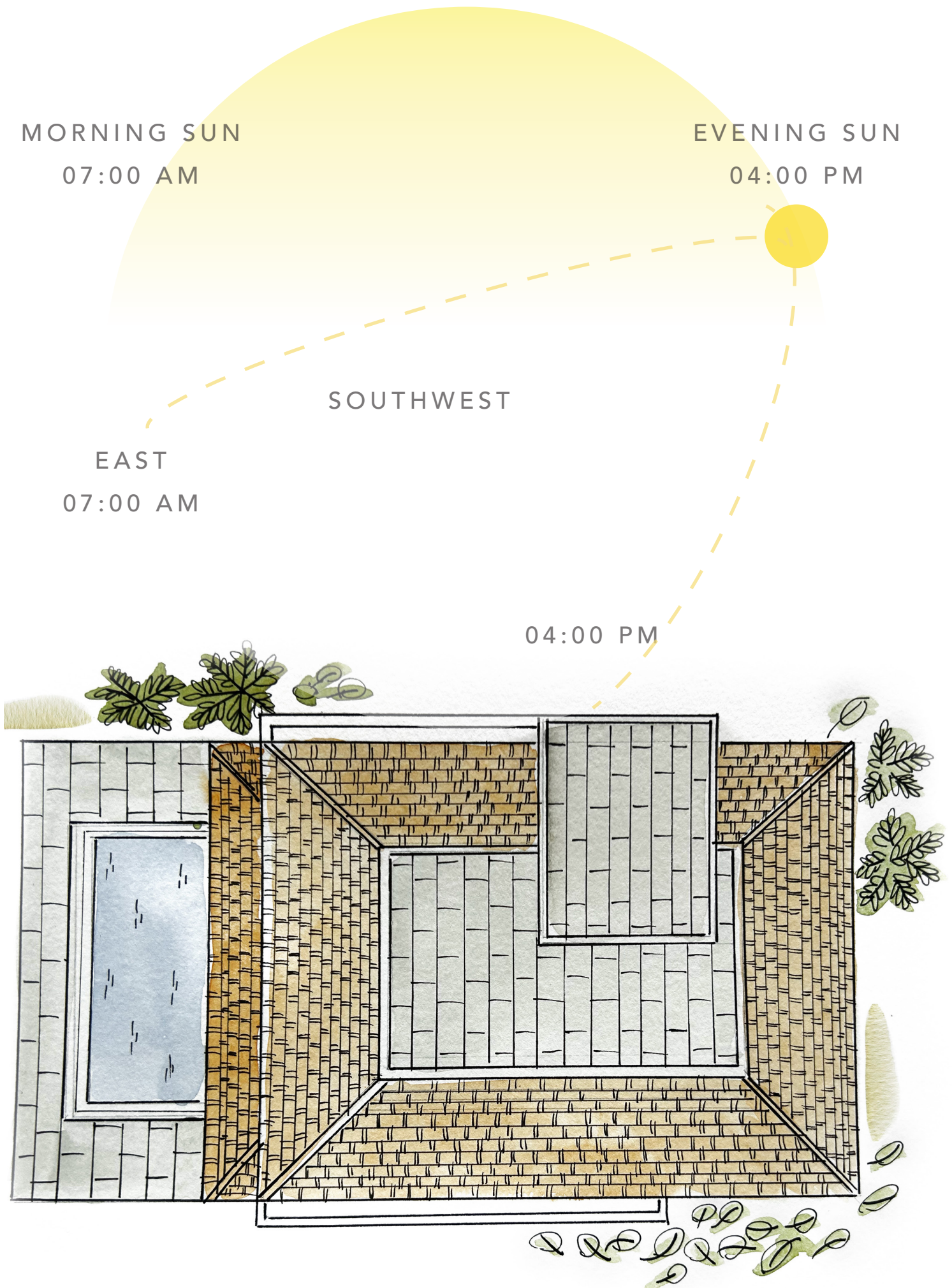
Salvador do Mundo,
Goa 403101

Set along the Mapusa River, Salvador do Mundo is a village shaped by land and water. Once an agrarian settlement, its landscape of terraced fields, shaded pathways, and tidal backwaters, follows the rhythms of nature. Quiet yet connected, it remains one of Goa's most private and storied enclaves.



N

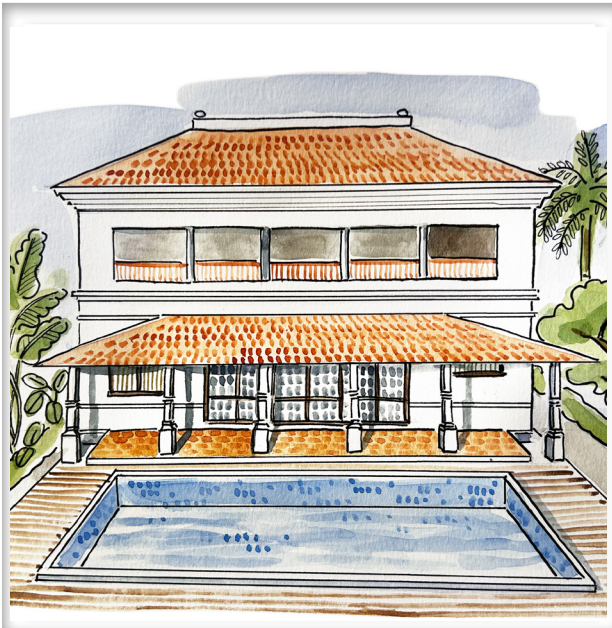
A Day in Light.
The Sun's Passage Through Space



Oriented to capture the west, the villas remain softly lit through the morning, with light filtering in from the east. As the day moves forward, sunlight deepens across courtyards, verandas, and open rooms, casting warm, shifting patterns through foliage and form. This natural rhythm of light brings a quiet balance to the interiors, creating spaces that feel open, calm, and constantly responsive to their surroundings.



VILLA A



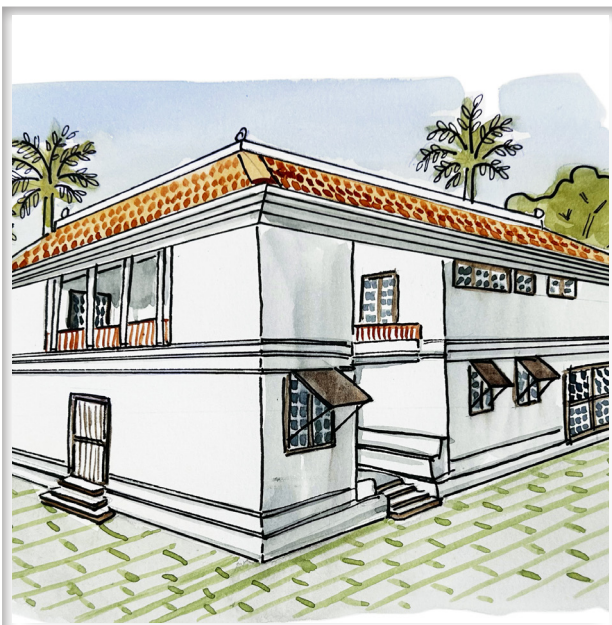
5723 SQFT
CARPET 4674 SQFT
4 BHK

VILLA B



5723 SQFT
CARPET 4674 SQFT
4 BHK

VILLA C



5593 SQFT
CARPET 4514 SQFT
4 BHK

VILLA D

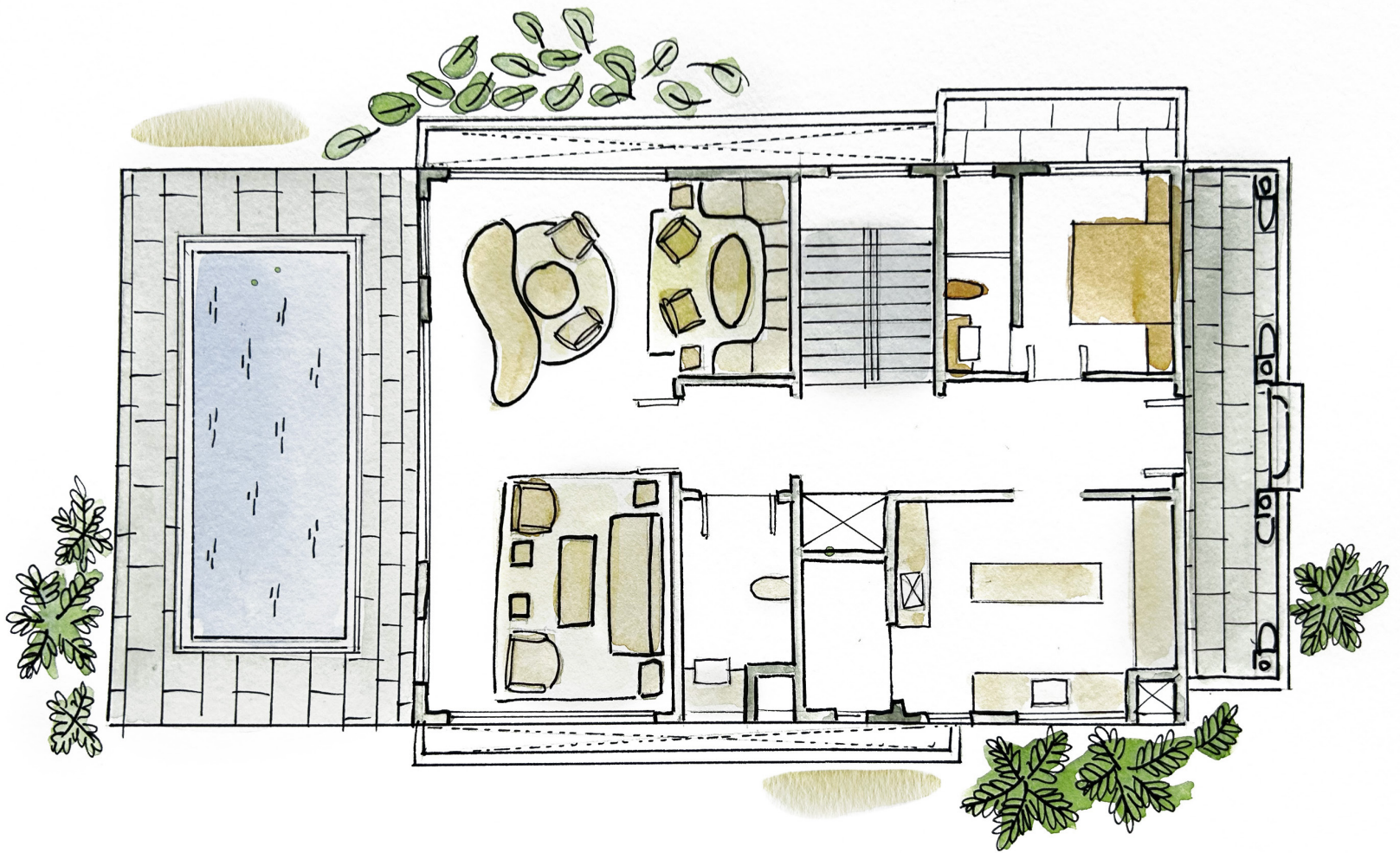


5593 SQFT
CARPET 4514 SQFT
4 BHK

Still water reflects an architecture of quiet strength. Rooted in the landscape of Salvador do Mundo, this residence is composed of measured proportions, grounded materials, and an openness to light. Spaces unfold with clarity and calm, offering a tactile and enduring experience where design serves both form and feeling.



N



GROUND FLOOR

SWIMMING POOL
250 SQFT

STORE ROOM
35 SQFT

LIVING ROOM
590 SQFT

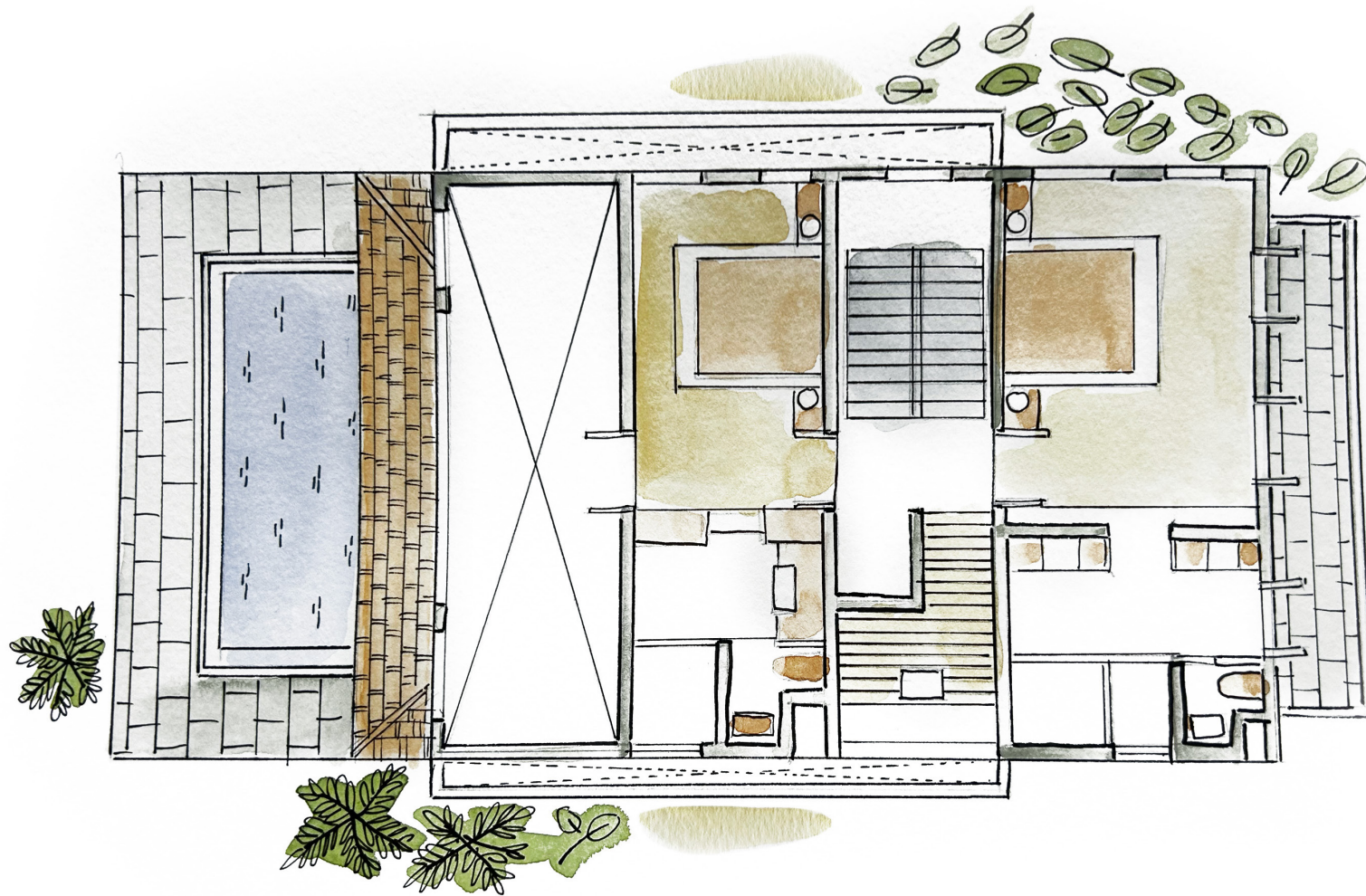
KITCHEN
223 SQFT

POWDER ROOM
70 SQFT

GUEST BEDROOM
133 SQFT

GUEST BATHROOM
51 SQFT

N



FIRST FLOOR

MASTER BEDROOM *1
311 SQFT

MASTER BEDROOM *2
223 SQFT

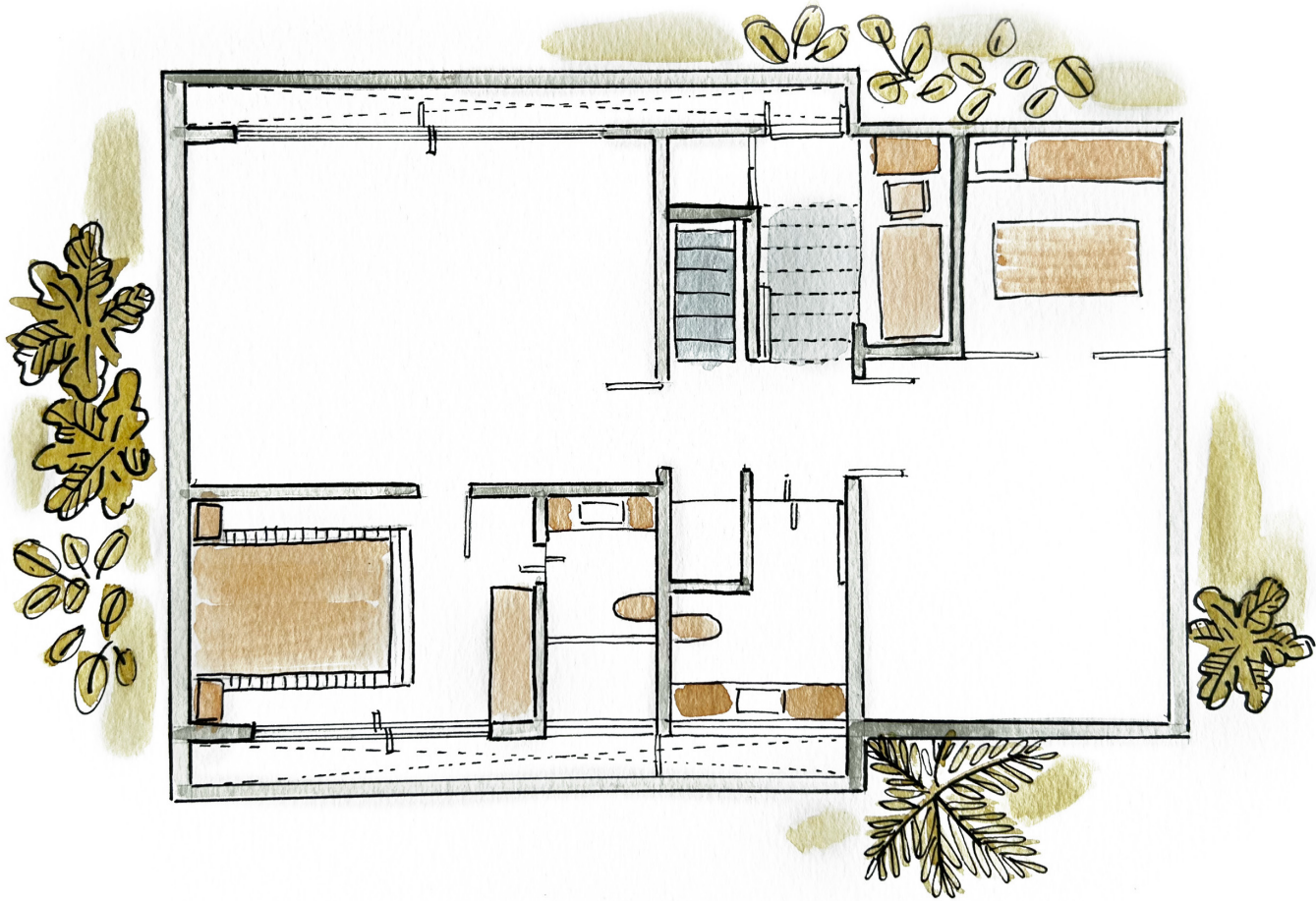
MASTER BATHROOM *1
190 SQFT

MASTER BATHROOM *2
136 SQFT

STUDY
57 SQFT

BALCONY
105 SQFT

N



BASEMENT FLOOR

MULTI-PURPOSE ROOM
487 SQFT

STORE ROOM
46 SQFT

GUEST BEDROOM
218 SQFT

GYM
311 SQFT

GUEST BATHROOM
70 SQFT

MASSAGE ROOM
138 SQFT

POWDER ROOM
58 SQFT

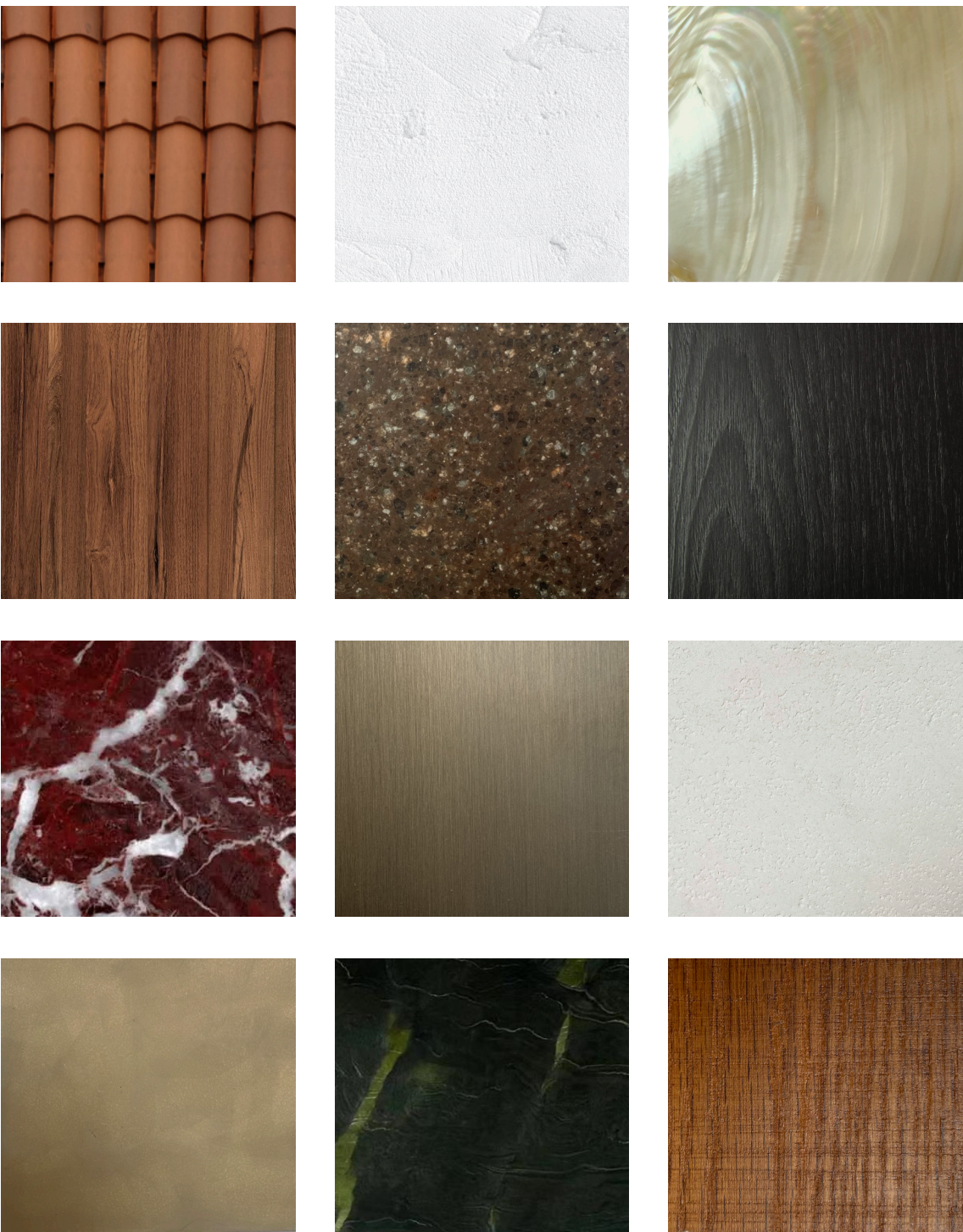
STAFF ROOM
107 SQFT

Framed by the villa's windows, the view opens onto a quiet expanse of rice paddies, their shifting greens stirred by the breeze. Beyond the fields, the Salvador backwaters glimmer in the distance, catching light through the day. It's a landscape that feels both immediate and far-reaching a living backdrop that brings texture, movement, and calm to everyday life.

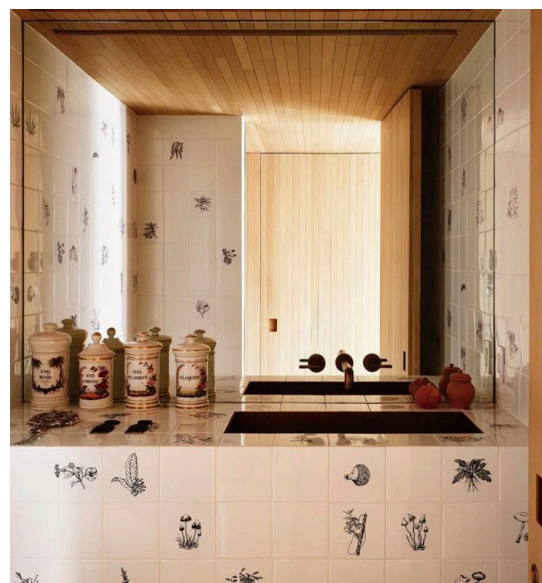
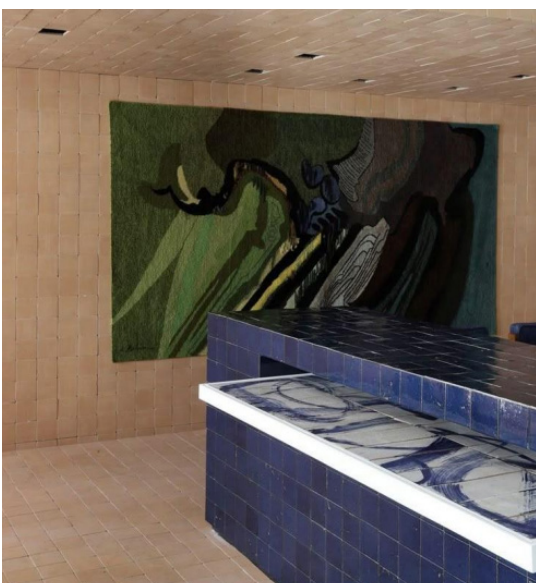
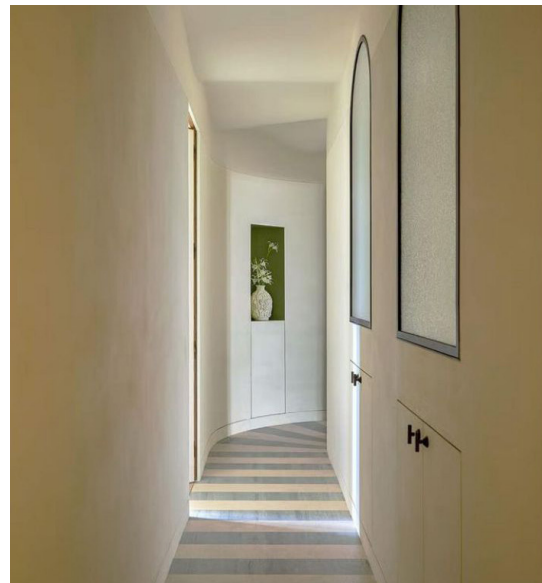
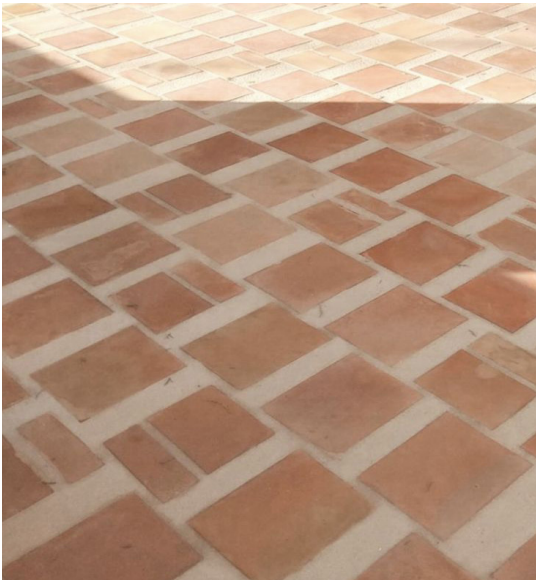


The language of material, shaped by design.

Villa Salvador’s material palette bridges tradition and contemporary luxury. The exteriors echo Goa’s Portuguese influences with lime-plastered walls, clay-tiled roofs, and shaded colonnades that embrace the tropical climate of Goa. Inside, Ashiesh Shah’s distinct aesthetic unfolds in sculpted forms and rich textures, polished stone, warm wood, and artisanal finishes, creating a home that is both timeless and indulgent.



THE MOOD





Beyond Convenience, Into Comfort

A home that moves with you, adapts to you, and anticipates your needs with thoughtful precision.



CHEF



HOUSE-KEEPING



LAUNDRY



CONCIERGE



CCTV



INTERCOM



WIFI



POWER



SPA



TRAINER



MASSAGE



MEDIC



CHAUFFEUR



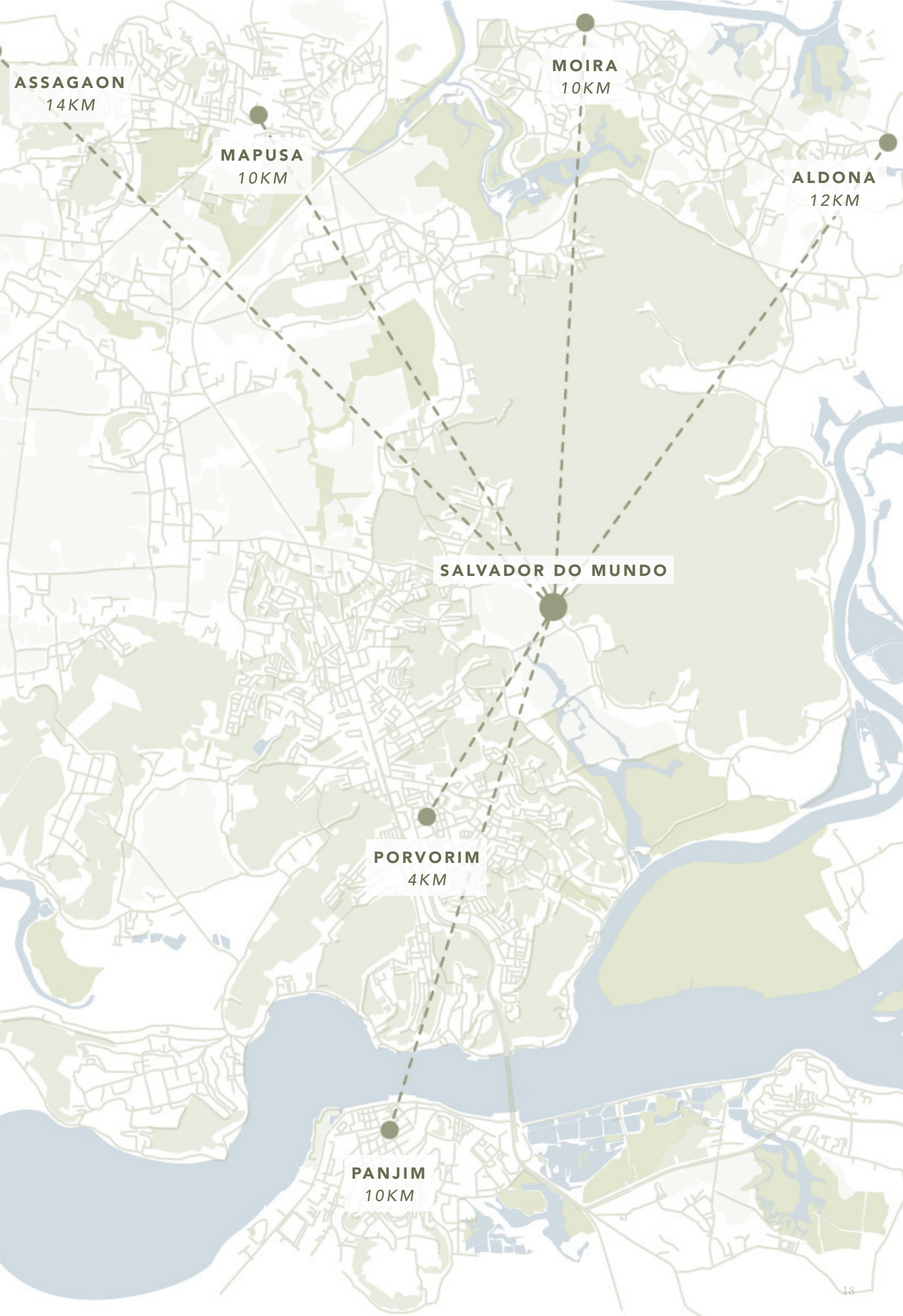
CHILDCARE



PET CARE



SOIRÉES



ASSAGAON
14KM

MAPUSA
10KM

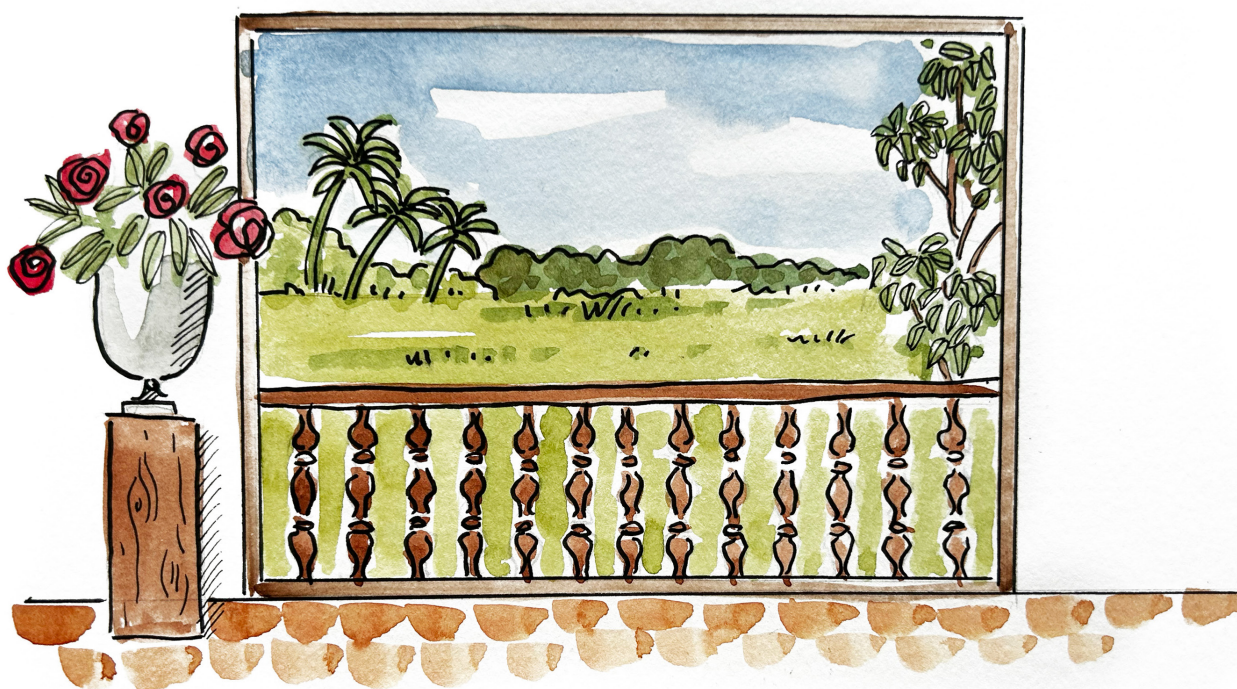
MOIRA
10KM

ALDONA
12KM

SALVADOR DO MUNDO

PORVORIM
4KM

PANJIM
10KM



AIRPORTS

Dabolim International Airport (GOI)
30 km / 45 min

Manohar International Airport (GOX)
25 km / 35 min

MEDICAL AND WELLNESS

Apollo Victor Hospital, Mapusa
10 km / 20 min

Saligaon Clinic & Diagnostics
8 km / 18 min

AyurVida Wellness Spa, Assagao
12 km / 25 min

DINING AND DRINKS

The Black Sheep Bistro, Panjim
7 km / 15 min

Gunpowder, Assagao
12 km / 20 min

Mojigao, Assagao
13 km / 22 min

Jolene By The Sea, Anjuna
17 km / 40 min

ATTRACTIONS

Salvador Backwaters
<1 km

St Rita Chapel, Salvador do Mundo
<1 km

House of Goa Museum
1.8 km / 5 min

C O N N E C T

+91 9833603033

info@sca peliving.in

instagram.com/sca peliving.in

